

## Setting Up The LPII Network

In this example we will use scale numbers 2 to 5, a PC IP address of 192.168.0.110, and a gateway address of 192.168.0.1. The scales will be 192.168.0.2 through 192.168.0.5. A crossover cable must be used from the PC to the router. On the last page is a picture of a crossover cable. At the bottom are directions for setting up the CAS wireless bridge. If the network is wireless proceed to the bridge set up after the scale set up.

1. With the main power switch off, press and hold down the ON/OFF key on the upper left corner of the keyboard.
2. While you are holding down the ON/OFF key, turn the Main power switch ON.
3. Once you hear a "chirp" release the ON/OFF key.
4. After a few seconds the scale will be in CAL mode.

The CAL Main Menu screen will appear as follows:

```
                < CAL: MAIN MENU >
1. CALIBRATION           5. NETWORK OPTIONS
2. SYSTEM OPTIONS       6. SELF TEST
3. DIGITAL FILTERING    7. NORMAL FUNCTION
4. PRINTER SETTINGS     8. PRICE OPTIONS
```

Once at the CAL Main Menu screen, press the 5 key for Network Options. The Network Options screen will then appear as follows:

```
                < CAL: NETWORK OPTIONS >                NUMERIC
Network Is Used?           (Y/N) : [Y]
PC Master is Used?        (Y/N) : [Y]
Clerk Mode (0-2) : [1]
This scale is number      : [ 2]
```

If you are using a PC as the master then change it to a "Y". The print key will advance through the line items. Assign a scale number {1-99}. Each scale on the network has to have its own unique number. Press the print key to advance to the second page.

```
                < CAL: NETWORK OPTIONS >                NUMERIC
( 1/ 2)
Scale IP Address          :[192.168.0.2  ]
Sub Net Mask              :[255.255.255.0 ]
Gateway                   :[192.168.0.254 ]
PC IP Address             :[192.168.0.110 ]
Scale UDP Port            [2002]
```

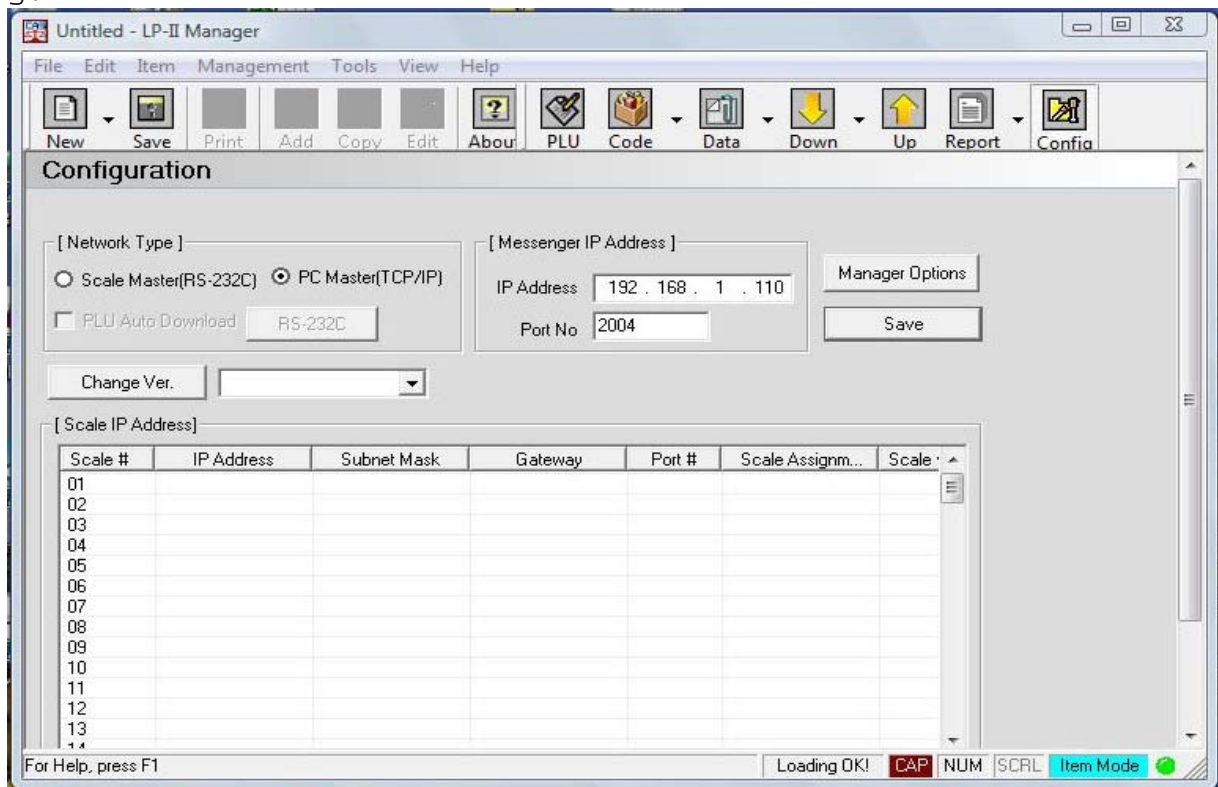
On this page you assign the Scale IP address and the PC IP address. Use the left arrow key, right arrow key, and delete key to move around or make corrections. The scale IP address has to end with the same number as the scale number you assigned on page one. The PC IP address is the static IP address that will be assigned in the PC. Do not change the Scale UDP port setting. Do not worry about the sub net mask or the gateway. Press the print key to go to page 3.

```

NUMERIC
( 2/ 2 ) < CAL: NETWORK OPTIONS >

PC UDP Port           :[2001]
PC UDP Port (for Messenger) :[2000]
  
```

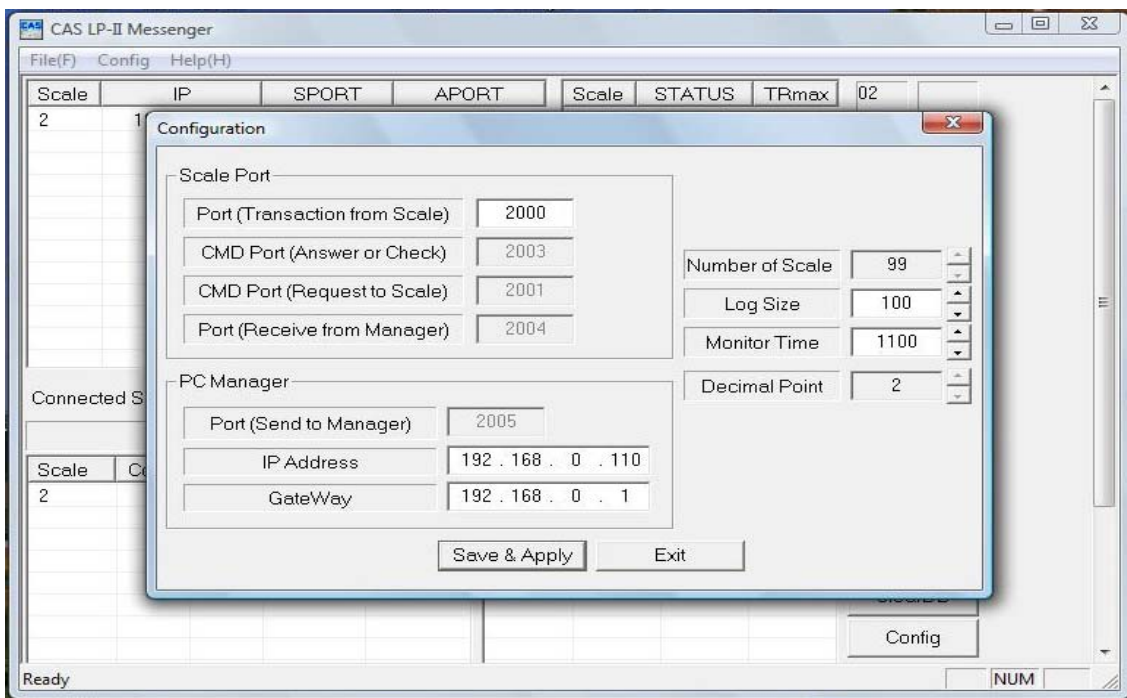
On page 3 make sure the port settings are set to the above values. Changing them will create communication problems. When this is all set press the **save** key and then the menu/esc key twice and the scale will reboot. The scale is now done being set up. Next open up the LPII manager and click on config.



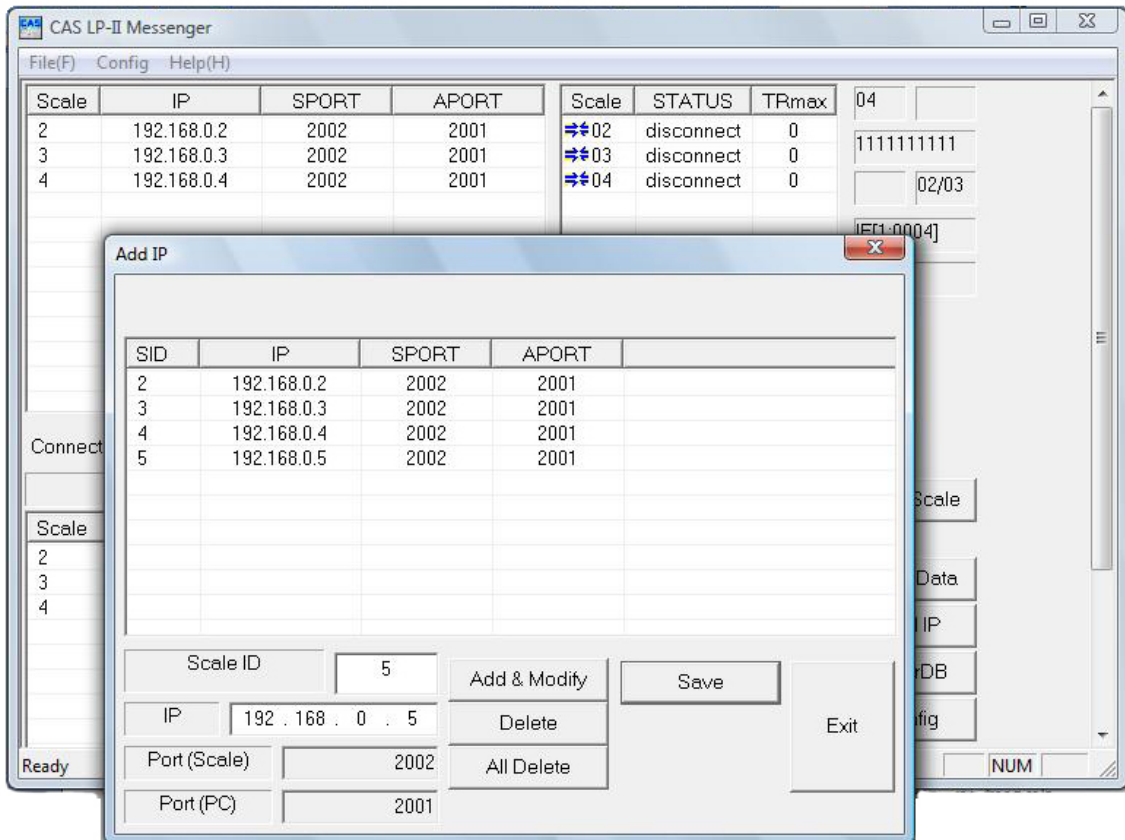
Select PC Master [TCP/IP] if not already selected. If it was not already selected there will be a prompt to restart the program. Close the program and reopen it. In the [Messenger IP Address] input the PC static IP address that is being used in the computer and that you inputted in the cal network options on the scale. Do not change the port number or it will create communication problems.

Next open the LP II Messenger. If it is not open when it is first clicked on in program files it will initially go to the toolbar. If it is already open it will appear as a CAS icon in the lower right tool bar. Click on the icon to open LP-II messenger.

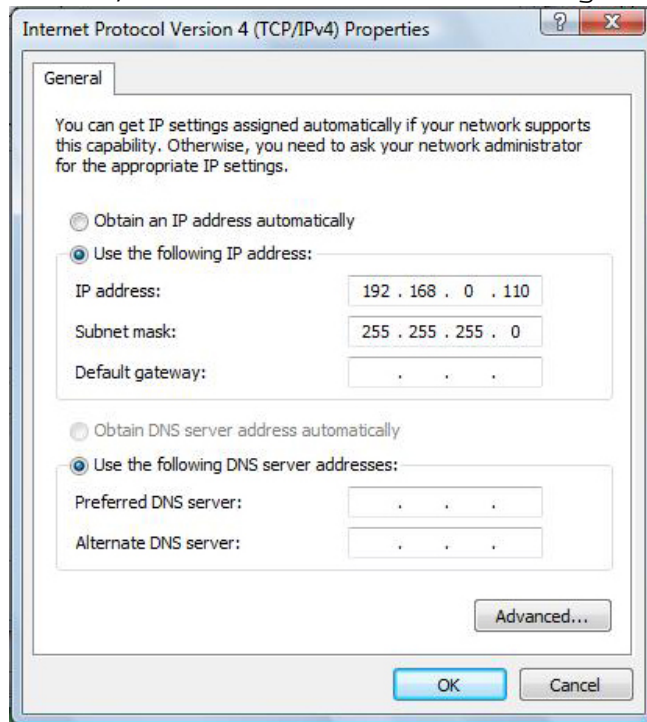
## LP II Messenger



With the messenger open click on config and select configuration from the drop down menu. The configuration box as above will open. Do not change the port setting. In the PC manager box input the PC static IP address that was set in both the PC and in the scale. Use 192.168.0.1 as the gateway. Click save & apply, then exit.



Next click on config again. From the drop down menu select Add IP. The box above will open. Put in the scale ID and the scale IP address that was used in the cal mode network options of the scale. Click add and modify. This has to be done for each individual scale. When all the scales are added click save, then exit. Leave messenger open.



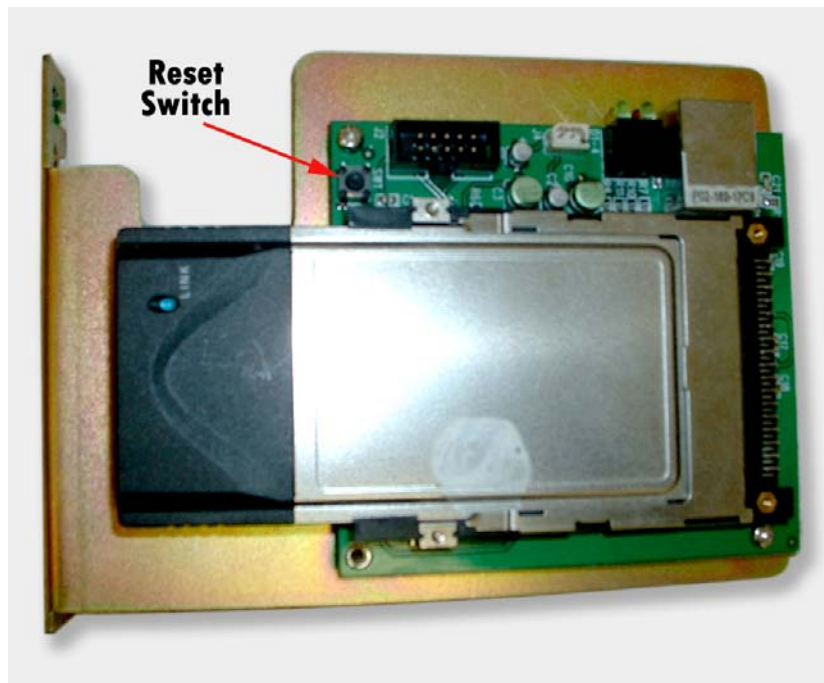
Next the TCP/IP address must be set up in the computer. Depending on the operating system find the control panel and open it. Next find network

connections. Open the network connections and right click on the icon for the connection to be used and click on properties on the drop down menu. In the box labeled "this connection uses the following items" find "internet protocol {TCP/IP}. In Vista there is V6 and V4. V4 must be used. Highlight it and click properties. Select "use the following IP address" and input the PC IP address. Do not worry about the subnet mask or gateway. The subnet mask will fill in automatically when you click OK. Don't worry about the default gateway. After clicking OK close everything to get back to the LP-II messenger screen. Click on "scan scale". If everything is perfect the program will connect to the scales. If not try the following:

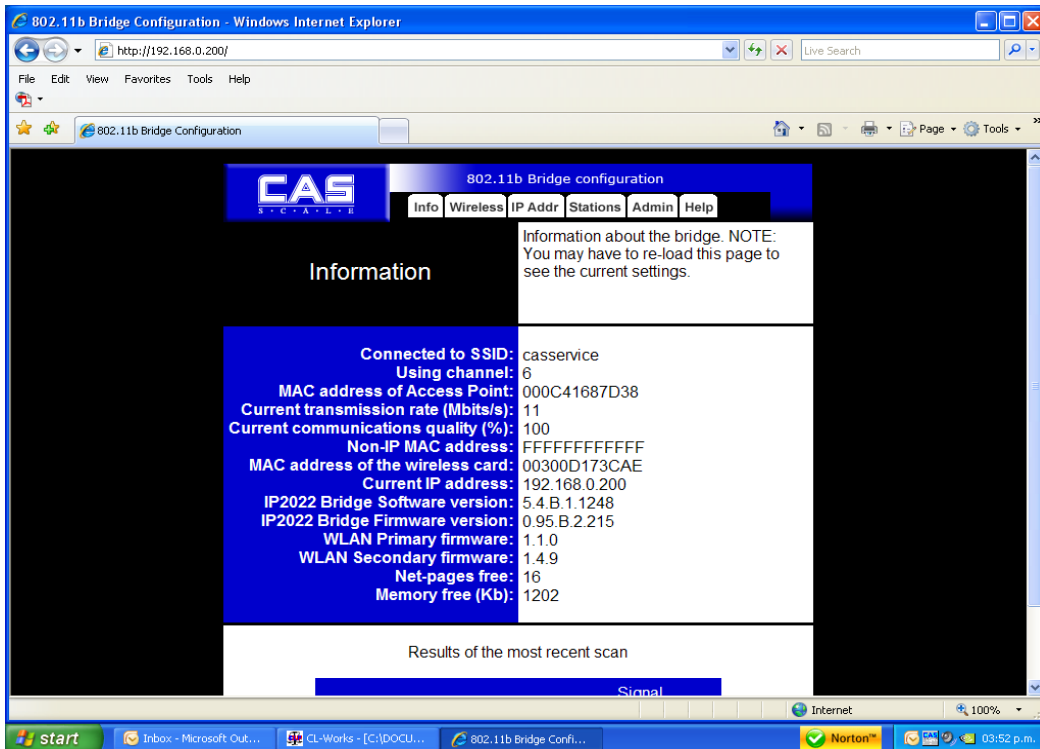
1. Try turning the scale off and back on.
2. Try turning off the computers firewall.
3. Reboot the computer.

### **CAS Wireless Bridge Setting**

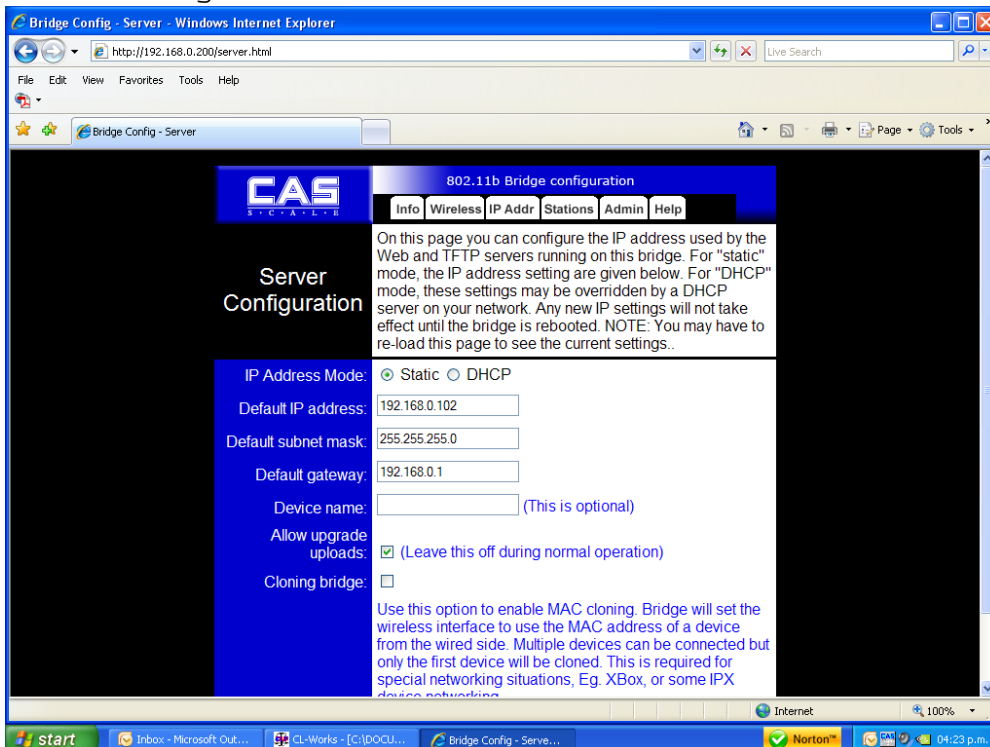
If the bridge IP address is unknown then hold down the reset switch for at least 30 seconds. It will reset to the default IP address. Unplug the bridge's Ethernet cable and plug in a crossover Ethernet cable from the computer to the bridge.



Open up internet explorer browser {or the default browser}. In the search field type in 192.168.0.200. This will access the bridge settings.

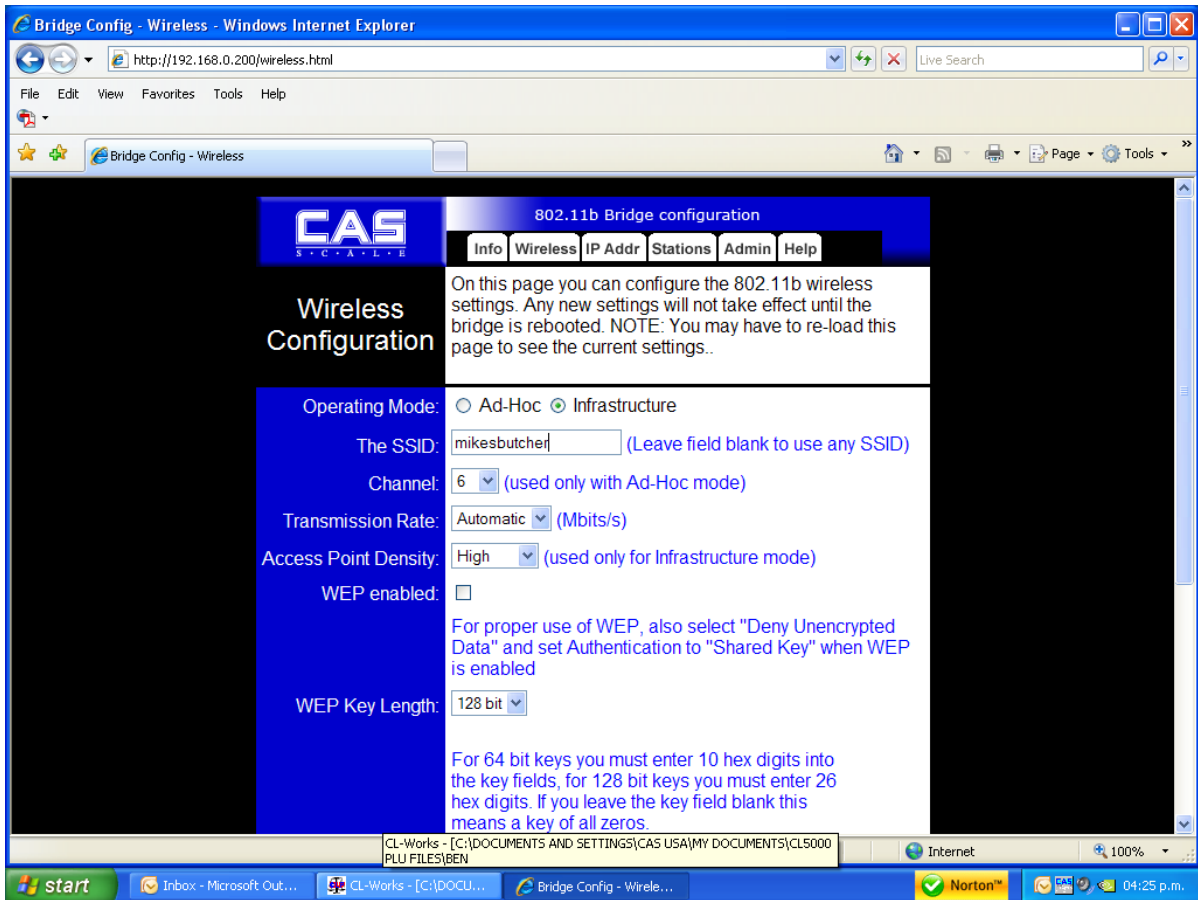


Click on IP Addr. For this example this bridge is in scale number 2. Therefore the IP address will be 192.168.0.102. The last digit of the IP is the scale number so each bridge IP address has to end with the scale number that the bridge is in.

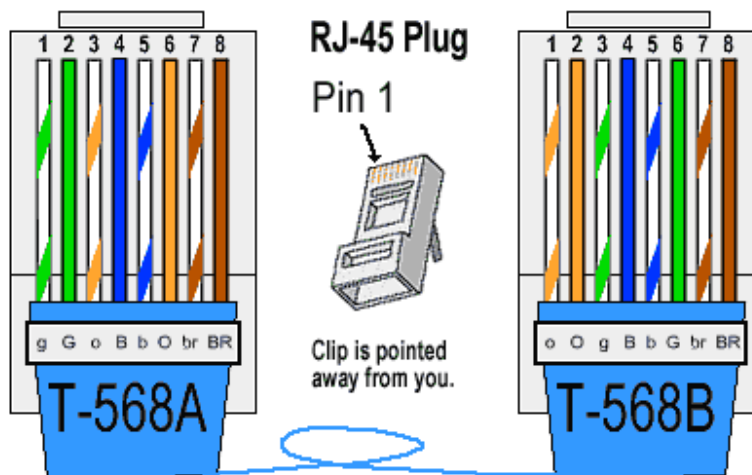


Next click on the wireless tab. Type in the Wireless Network Name {SSID}. This is the SSID of the router or access point that is in use. Consult the User manual for that device. If you want to use the WEP select WEP enable.

Follow the on screen instructions. After that click save then click reboot and wait at least a minute before unplugging the Ethernet cable from the bridge.

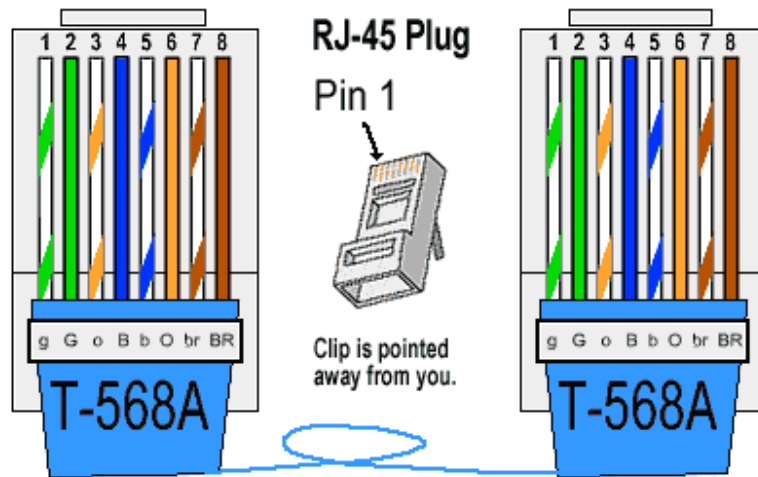


The bridge is now set up. Plug the scale Ethernet cable back into the bridge.



Looking at the same side of each connector a crossover cable has pin Pin 1 going to pin 3, pin 2 going to pin 6, pin 3 going to pin 1, pin Pin 4 and 5 do not cross, pin 6 going to pin 2, and pin 7 and 8 do not

Cross.



This is a straight through cable. None of the wires crossover.