

CAS^{16M} SERIES

Tank Mount

- Designed for use in medium to heavy capacity tanks, hoppers, and bin scales
- Capacities ranging from 1,000 lbs to 75,000 lbs
- Mild steel, stainless steel, and hybrid mount construction
- Environmentally protected to hermetic sealed welded cap - IP67 rated
- Perfect for mechanical conversions & new installations - Very popular and price competitive
- Easy installation
- Low profile with self checking movement



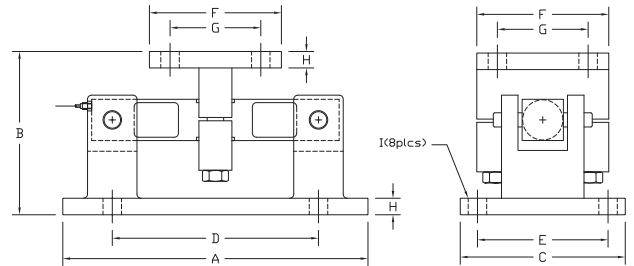
CAS

www.cas-usa.com

CAS^{16M} SERIES | Tank Mount

DIMENSIONS

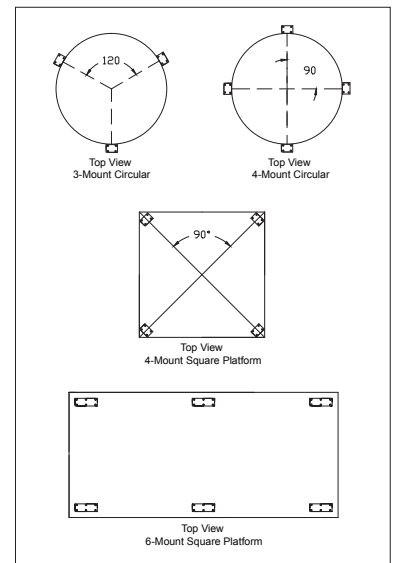
Rated Capacity	Dimensions								
	A	B	C	D	E	F	G	H	I
1K - 5K	9.25	5.00	5.00	6.25	3.75	4.00	2.75	0.50	0.56
10K - 25K, 35K	12.00	7.90	8.00	7.50	6.00	8.00	6.00	0.75	0.81
50K, 75K	16.25	9.30	12.00	11.50	9.50	9.00	6.50	1.00	0.81
100K - 125K	23.50	11.75	14.00	20.00	12.00	10.00	8.00	1.12	1.12



LOAD CELLS - CAS-16L, CAS-16LW

Specifications			
Rated Output (mV/V)	3.00 +/- 0.1%	Insulation Resistance	5000 Megohms
Nonlinearity	+/- 0.03% FS	Excitation Voltage	10V AC/DC (20V Max)
Hysteresis	+/- 0.02% FS	Compensated Temp. Range	-10°C - +40°C
Repeatability	+/- 0.01% FS	Operating Temp. Range	-20°C - +60°C
Creep (30 minutes)	+/- 0.02% FS	Safe Overload	150% FS
Zero Balance	+/- 1.00% FS	Cable Length	1K - 5K 50' Standard Cable
Temp. Effect on Zero	+/- 0.0027% of rated output/°C		10K - 125K 50' Braided Cable
Temp. Effect on Output	+/- 0.0015% of applied output/°C	Cable Color Code	Input Green +Excitation
Input Impedance	700 +/- 10 ohms		Black -Excitation
Output Impedance	700 +/- 5 ohms	Output	White +Signal
Seal Type	CAS-16L Environmentally-Sealed, IP67		Red -°Signal
	CAS-16LW Welded-Seal, IP67	Approvals	FM

APPLICATION



Models

Alloy Steel Load Cell with Mild Steel Mount									
Model #	Capacity	Model #	Capacity	Model #	Capacity	Model #	Capacity	Model #	Capacity
CAS-16M-1M	1K	CAS-16M-2AM	2.5K	CAS-16M-10M	10K	CAS-16M-25M	25K	CAS-16M-75M	75K
CAS-16M-1AM	1.5K	CAS-16M-3M	3K	CAS-16M-15M	15K	CAS-16M-35M	35K	CAS-16M-100M	100K
CAS-16M-2M	2K	CAS-16M-5M	5K	CAS-16M-20M	20K	CAS-16M-50M	50K	CAS-16M-125M	125K

Stainless Steel Welded Load Cell with Mild Steel Mount			
Model #	Capacity	Model #	Capacity
CAS-16MW-1M	1K	CAS-16MW-15M	15K
CAS-16MW-1AM	1.5K	CAS-16MW-20M	20K
CAS-16MW-2M	2K	CAS-16MW-25M	25K
CAS-16MW-2AM	2.5K	CAS-16MW-35M	35K
CAS-16MW-3M	3K	CAS-16MW-50M	50K
CAS-16MW-5M	5K	CAS-16MW-75M	75K
CAS-16MW-10M	10K		

Stainless Steel Welded Load Cell with Stainless Steel Mount			
Model #	Capacity	Model #	Capacity
CAS-16MS-1M	1K	CAS-16MS-15M	15K
CAS-16MS-1AM	1.5K	CAS-16MS-20M	20K
CAS-16MS-2M	2K	CAS-16MS-25M	25K
CAS-16MS-2AM	2.5K	CAS-16MS-35M	35K
CAS-16MS-3M	3K	CAS-16MS-50M	50K
CAS-16MS-5M	5K	CAS-16MS-75M	75K
CAS-16MS-10M	10K		

Kits Available

3 Mount or 4 Mount Kits available. Kits will include the CAS SS34AS NEMA 4X Stainless Steel Junction Box with 4 cell signal trim summing card and 25' of cable.



99 Murray Hill Parkway
East Rutherford, NJ 07073
TEL: (201) 933-9002
FAX: (201) 933-9025
<http://www.cas-usa.com>

Specifications are subject to change for improvement without prior notice.