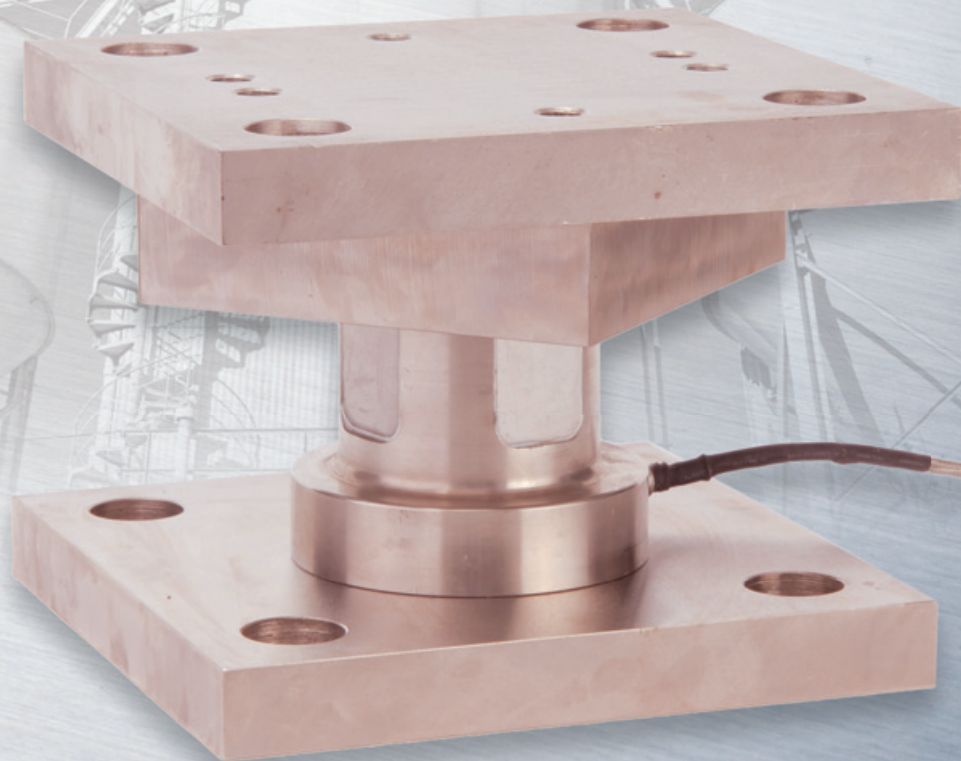


CAS^{94M} SERIES

Tank Mount

- Designed for use with tanks, bins, reactors, and large capacity storage silos
- Capacities ranging from 50,000 lbs to 300,000 lbs
- Mild steel, stainless steel, or hybrid construction
- Easy to install
- Self checking



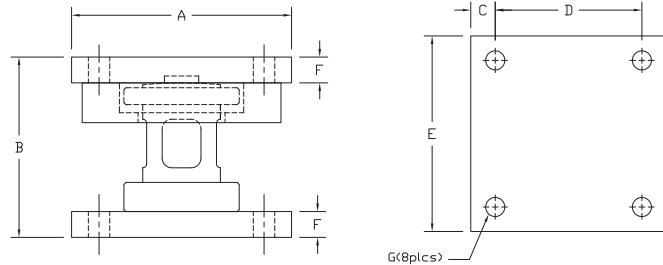
CAS

www.cas-usa.com

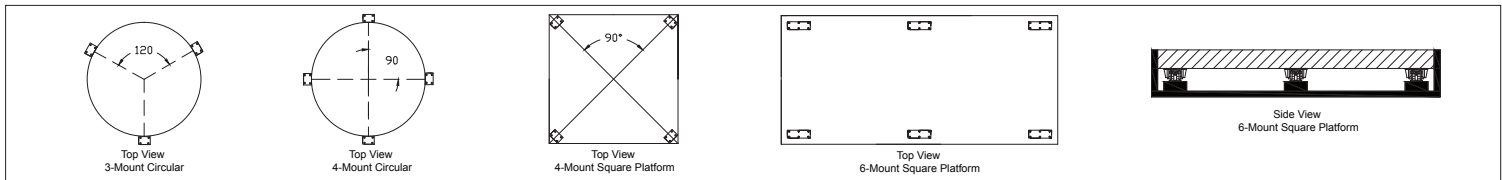
CAS^{94M} SERIES | Tank Mount

DIMENSIONS

Rated Capacity	Dimensions						
	A	B	C	D	E	F	G
50K	8.00	5.13	1.00	6.00	8.00	0.94	0.78
100K	10.00	7.38	1.25	7.50	10.00	1.19	1.12
200K	12.00	9.50	1.75	8.50	12.00	1.44	1.63
300K	14.00	11.00	2.25	9.50	14.00	1.94	1.63



APPLICATION



LOAD CELL - CAS-94

Specifications			
Rated Output (mV/V)	2.00 +/- 0.1%	Insulation Resistance	5000 Megohms
Nonlinearity	+/- 0.05% FS	Excitation Voltage	10V AC/DC (20V Max)
Hysteresis	+/- 0.03% FS	Compensated Temp. Range	-10°C - +40°C
Repeatability	+/- 0.01% FS	Operating Temp. Range	-20°C - +60°C
Creep (30 minutes)	+/- 0.03% FS	Safe Overload	150% FS
Zero Balance	+/- 1.00% FS	Cable Length	50' Braided Shield Cable
Temp. Effect on Zero	+/- 0.0027% of rated output/°C	Cable Color Code	
Temp. Effect on Output	+/- 0.0015% of applied output/°C	Input	Green +Excitation
Input Impedance	385 +/- 10 ohms		Black -Excitation
Output Impedance	350 +/- 3 ohms	Output	White +Signal
Seal Type	Environmentally-Sealed, IP 67		Red -Signal
		Approvals	FM

Models

Alloy Steel Load Cell with Mild Steel Mount			
Model #	Capacity	Model #	Capacity
CAS-94M-50M	50K	CAS-94M-200M	200K
CAS-94M-100M	100K	CAS-94M-300M	300K

Stainless Steel Load Cell with Mild Steel Mount			
Model #	Capacity	Model #	Capacity
CAS-94MS-50M	50K	CAS-94MS-200M	200K
CAS-94MS-100M	100K	CAS-94MS-300M	300K

Stainless Steel Load Cell with Stainless Steel Mount			
Model #	Capacity	Model #	Capacity
CAS-94MSS-50M	50K	CAS-94MSS-200M	200K
CAS-94MSS-100M	100K	CAS-94MSS-300M	300K

Kits Available

3 Mount or 4 Mount Kits available. Kits will include the CAS SS34AS NEMA 4X Stainless Steel Junction Box with 4 cell signal trim summing card and 25' of cable.

CAS

99 Murray Hill Parkway
 East Rutherford, NJ 07073
 TEL: (201) 933-9002
 FAX: (201) 933-9025
<http://www.cas-usa.com>

Specifications are subject to change for improvement without prior notice.