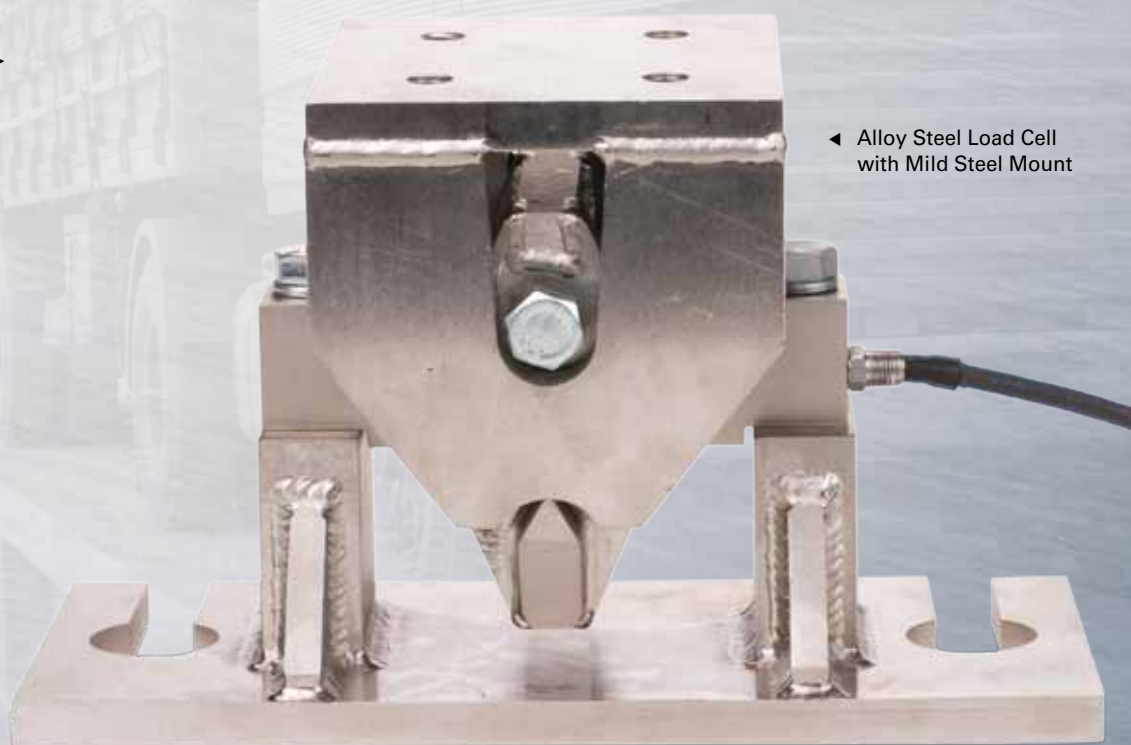


CAS^{TSA} SERIES

Tank Mount

- Ideal for motor truck, track, horizontal tank, livestock, or general purpose use
- Capacities ranging from 10,000 lbs to 75,000 lbs
- High performance suspension system
- Center loaded double-ended shear beam design
- Rubber pad provided for mounting
- Self checking



◀ Alloy Steel Load Cell
with Mild Steel Mount

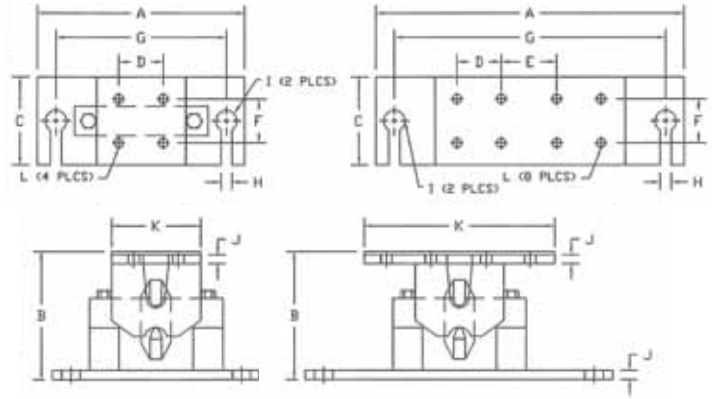
CAS

www.cas-usa.com

CAS^{TSA} SERIES | Tank Mount

Dimensions

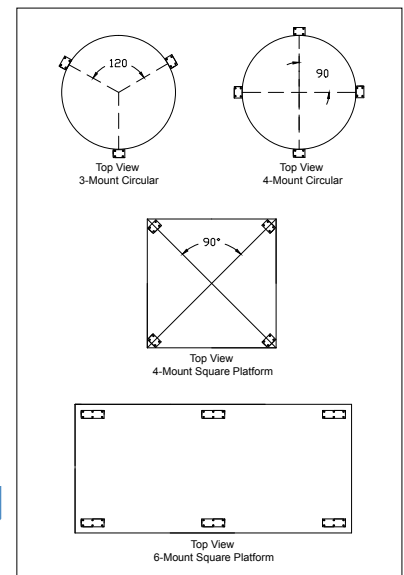
Rated Capacity	Dimensions					
	A	B	C	D	E	F
10K, 20K, 25K	14.00	8.75	6.00	3.00	-	3.00
50K, 60K, 75K	18.00	11.00	7.00	3.00	4.00	3.50
	G	H	I	J	K	L
10K, 20K, 25K	11.00	0.88	1.75	0.62	6.00	5/8-11UNC
50K, 60K, 75K	14.00	1.10	2.00	0.75	12.75	3/4-10UNC



CAS-58 Alloy Steel Double Ended Load Cell

Specifications			
Rated Output (mV/V)	3.00 +/- 0.1%	Excitation Voltage	10V AC/DC (20V Max)
Nonlinearity	+/- 0.03% FS	Compensated Temp. Range	-10°C - +40°C
Hysteresis	+/- 0.02% FS	Operating Temp. Range	-20°C - +60°C
Repeatability	+/- 0.01% FS	Safe Overload	150% FS
Creep (30 minutes)	+/- 0.02% FS	Cable Length	50' Braided Shield Cable
Zero Balance	+/- 1.00% FS	Cable Color Code	
Temp. Effect on Zero	+/- 0.0027% of rated output/°C	Input	Green +Excitation
Temp. Effect on Output	+/- 0.0015% of applied output/°C		Black -Excitation
Input Impedance	700 +/- 10 ohms	Output	White +Signal
Output Impedance	700 +/- 5 ohms		Red -Signal
Insulation Resistance	5000 Megohms	Approvals	NTEP (Load Cell Only): 08-112
Seal Type	Environmentally-Sealed, IP 67		FM

Application



Models

Alloy Steel Load Cell with Mild Steel Mount			
Model #	Capacity	Model #	Capacity
CAS-TSA-10M	10K	CAS-TSA-50M	50K
CAS-TSA-20M	20K	CAS-TSA-60M	60K
CAS-TSA-25M	25K	CAS-TSA-70M	70K

Kits Available

3 Mount or 4 Mount Kits available. Kits will include the CAS SS34AS NEMA 4X Stainless Steel Junction Box with 4 cell signal trim summing card and 25' of cable.



99 Murray Hill Parkway
East Rutherford, NJ 07073

TEL: (201) 933-9002

FAX: (201) 933-9025

<http://www.cas-usa.com>

Specifications are subject to change for improvement without prior notice.