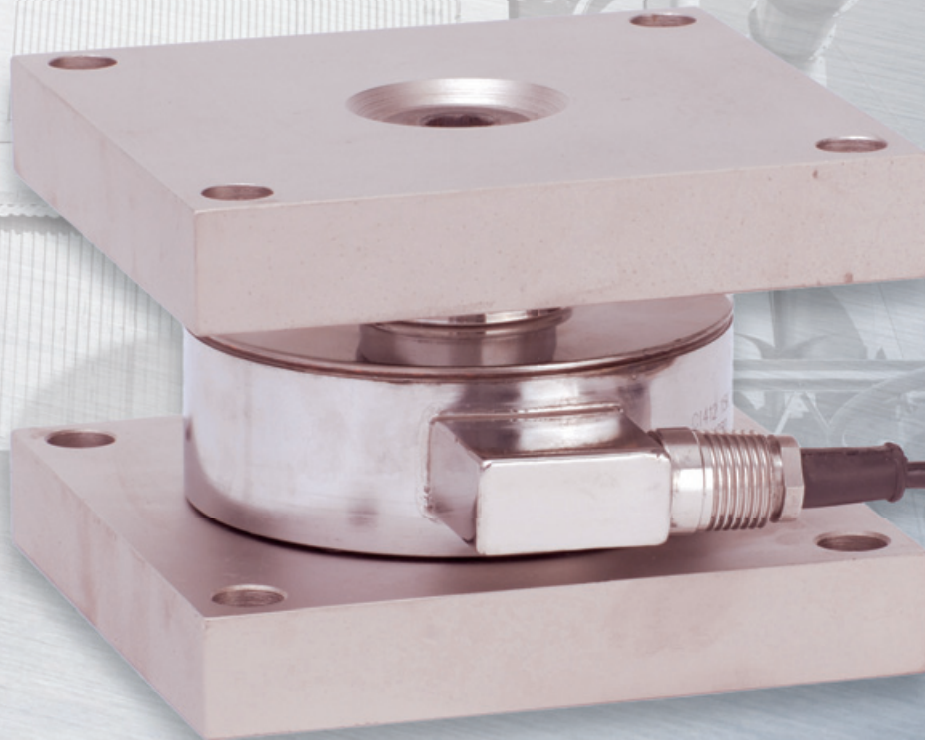


CAS^{412M} SERIES

Tank Mount

- Use with tanks, bin and hopper weighing, silo, batching, and blending
- Capacities ranging from 10,000 lbs to 50,000 lbs
- Low profile, all stainless steel canister assembly
- Hermetically sealed load cell - IP67 rated
- Self checking with integral mounting plates



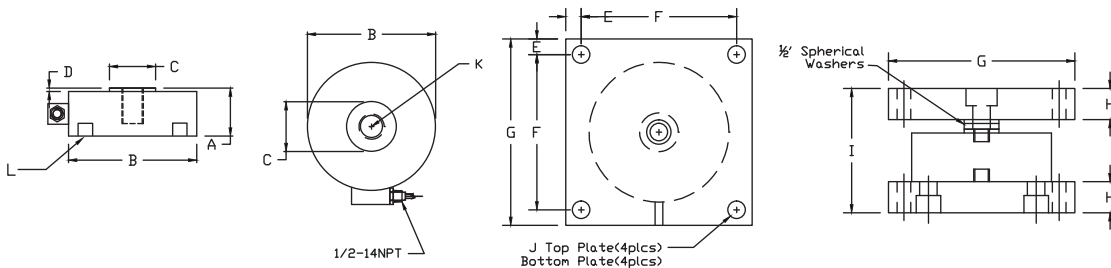
CAS

www.cas-usa.com

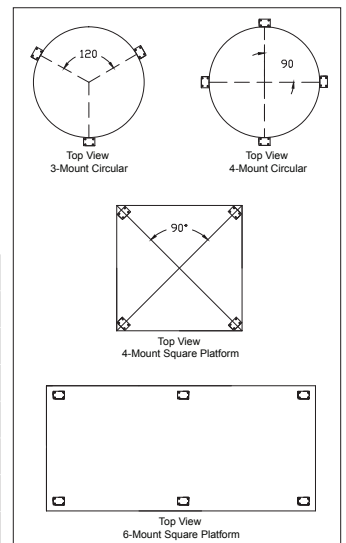
CAS^{412M} SERIES | Tank Mount

DIMENSIONS

Rated Capacity		Dimensions										
		A	B	C	D	E	F	G	H	I	J	K
Mount & Load Cell	10K - 25K	-	-	-	-	0.50	5.00	6.00	1.00	4.00	0.56	-
	30K - 50K	-	-	-	-	0.75	6.50	8.00	1.25	5.00	0.69	-
Load Cell Only	10K - 25K	2.18	4.50	1.62	0.50	3/8 - 24UNF x 1.00 deep					-	3/4 - 16UNF x 1.00 deep
	30K - 50K	2.51	4.50	1.62	0.50	3/8 - 24UNF x 1.00 deep					-	3/4 - 16UNF x 1.00 deep



APPLICATION



LOAD CELL - CAS-412

Specifications			
Full Scale Output (mV/V)	2.00 +/- 0.1%	Cable Color Code	
Load Cell Resistance	1000 ohms	Input	Green +Excitation
Load Cell Cable	4 Conductor, 50'		Black -Excitation
Material/Finish	Stainless Steel	Output	White +Signal
Safe Overload	150% FS		Red -Signal
Excitation Voltage	10V AC/DC (15V Max)	Approvals	FM
Compensated Temp. Range	-10°C - +40°C		

Models

Stainless Steel Load Cell with Stainless Steel Mount			
Model #	Capacity	Model #	Capacity
CAS-412M-10M	10K	CAS-412M-25M	25K
CAS-412M-15M	15K	CAS-412M-30M	30K
CAS-412M-20M	20K	CAS-412M-50M	50K

Kits Available

3 Mount or 4 Mount Kits available. Kits will include the CAS SS34AS NEMA 4X Stainless Steel Junction Box with 4 cell signal trim summing card and 25' of cable.



99 Murray Hill Parkway
East Rutherford, NJ 07073

TEL: (201) 933-9002

FAX: (201) 933-9025

<http://www.cas-usa.com>

Specifications are subject to change for improvement without prior notice.